



Superior Clamping and Gripping



Product Information

Universal gripper PGN-plus-P 100

PGN-plus-P

Universal gripper

Reliable. Robust. Flexible.

Universal gripper PGN-plus-P

Universal electric 2-finger parallel gripper with permanent lubrication, high gripping force, and high maximum moments due to the use of a multi-tooth guidance.

Field of application

Pneumatic universal gripper for handling of workpieces in universal applications. For universal use in clean to slightly dirty environments. Special versions available for dirty environments.

Advantages – Your benefits

Robust multi-tooth guidance for precise handling

High maximum moments possible suitable for using long gripper fingers

Lubricant pockets in the multi-tooth guidance ensure process reliability and extended maintenance intervals

Maximum piston surface area for maximum gripping forces

Mounting from two sides in three screw directions for universal and flexible gripper assembly

Air supply via hose-free direct connection or screw connections for universal and flexible gripper assembly

Comprehensive sensor accessory program for versatile querying possibilities and stroke position monitoring

Manifold options for special optimization for your specific case of application (dust-tight, high-temperature, corrosion-protected, and much more)



Sizes
Quantity: 7



Weight
0.08 .. 7.6 kg



Gripping force
180 .. 8750 N



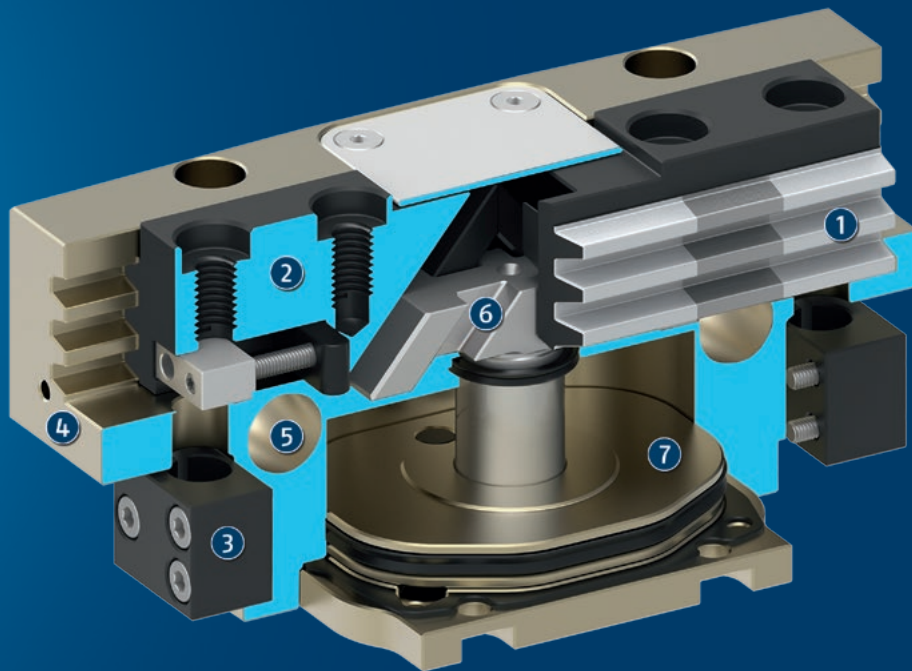
Stroke per jaw
2 .. 25 mm



Workpiece weight
0.9 .. 32.5 kg

Functional description

The piston is moved up and down by compressed air. The angled active surfaces of the wedge-hook produce a synchronized, parallel jaw motion.



- ① **Multi-tooth guidance**
Maximum service life due to lubricant pockets in the robust multi-tooth guidance, and absorption of high forces and torques by means of the large guidance support
- ② **Base Jaw**
with standardized screw connection diagram for the connection of the workpiece-specific gripper fingers
- ③ **Bracket for sensors**
Brackets for proximity switches and adjustable control cams in the housing
- ④ **Housing**
is weight-optimized due to the use of high-strength aluminum alloy
- ⑤ **Centering and mounting possibilities**
for universal assembly of the gripper
- ⑥ **Wedge-hook design**
for high power transmission and minimal wear as a result of larger diagonal pull surfaces
- ⑦ **Piston**
Maximum force through maximum surface of drive piston

PGN-plus-P

Universal gripper

General notes about the series

Operating principle: Wedge gear with surface power transmission

Housing material: Aluminum

Base jaw material: Steel

Actuation: pneumatic, with filtered compressed air as per ISO 8573-1:2010 [7:4:4].

Warranty: 36 months

Longlife: 30 years functional warranty (details can be found online)

Scope of delivery: Brackets for proximity switches, centering sleeves, O-rings for direct connection, assembly instructions (operating manual with declaration of incorporation is available online)

Gripping force maintenance: possible by using the version with mechanical gripping force maintenance or pressure maintenance valve SDV-P

Gripping force: is the arithmetic sum of the individual force applied to each jaw at distance P (see illustration).

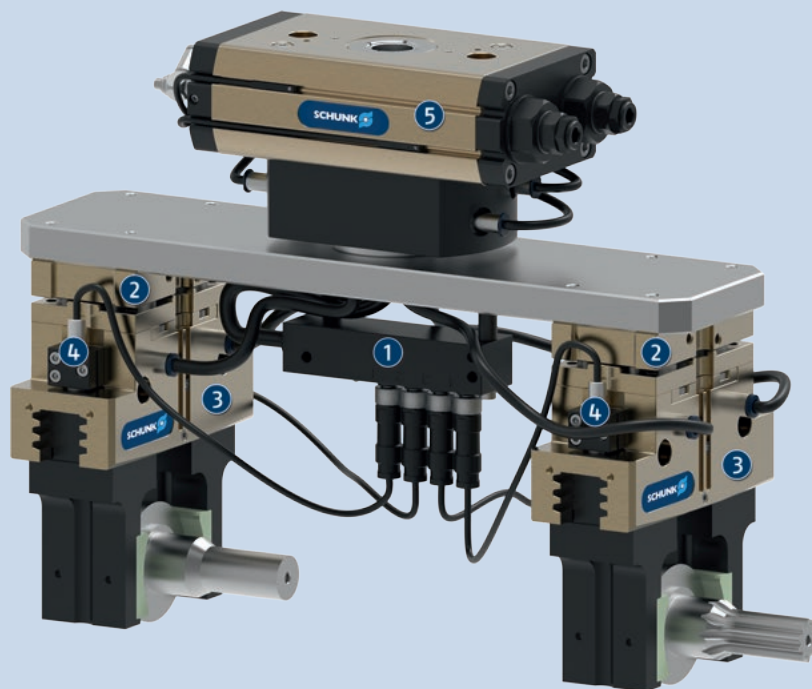
Finger length: is measured from the reference surface as the distance P in direction to the main axis.

The maximum permissible finger length applies until the nominal operating pressure is achieved. With higher pressures, the finger length must be reduced proportionally to the nominal operating pressure.

Repeat accuracy: is defined as a distribution of the end position for 100 consecutive strokes.

Workpiece weight: is calculated for force-fit gripping with a coefficient of static friction of 0.1 and a safety factor of 2 against workpiece slippage at acceleration due to gravity g. For form-fit or capture gripping, there are significantly higher permissible workpiece weights.

Closing and opening times: are purely the times that the base jaws or fingers are in motion. Valve switching times, hose fill times, or PLC reaction times are not included, and are to be considered when cycle times are calculated.



Application example

Handling tool for loading and unloading raw and finished parts and compensation of inaccurate position. A sensor distributor is used for routing signals through a cable.

- ① Sensor distributor V4
- ② Tolerance compensation unit TCU-Z
- ③ Universal gripper PGN-plus-P
- ④ IN sensors
- ⑤ Universal rotary actuator SRM

SCHUNK offers more ...

The following components make the product PGN-plus-P even more productive – the suitable addition for the highest functionality, flexibility, reliability, and controlled production.



Rotary unit



Quick change system



Compensation unit



Linear module



Jaw quick-change system



Finger blank



Pressure maintenance valve



Universal intermediate jaw



Flexible position sensor



Analog position sensor



Magnetic switches



Inductive proximity switches

① For more information on these products can be found on the following product pages or at schunk.com. Please contact us: SCHUNK technical hotline +49-7133-103-2696

Options and special information

Gripping force maintenance version AS/IS: The mechanical gripping force maintenance version ensures minimum gripping force even in the event of a pressure drop. In the AS/IS version this acts as a closing force, in the IS version as an opening force.

High-temperature version V/HT: for use in hot environments

Precision version P: for the highest accuracy

Anti-corrosion version K: for use in corrosion-inducing atmospheres

ATEX version EX: for explosive environments

Dust-tight version SD: absolutely dust-tight, increased degree of protection against ingress of materials.

Additional versions: Various options can be combined with each other.

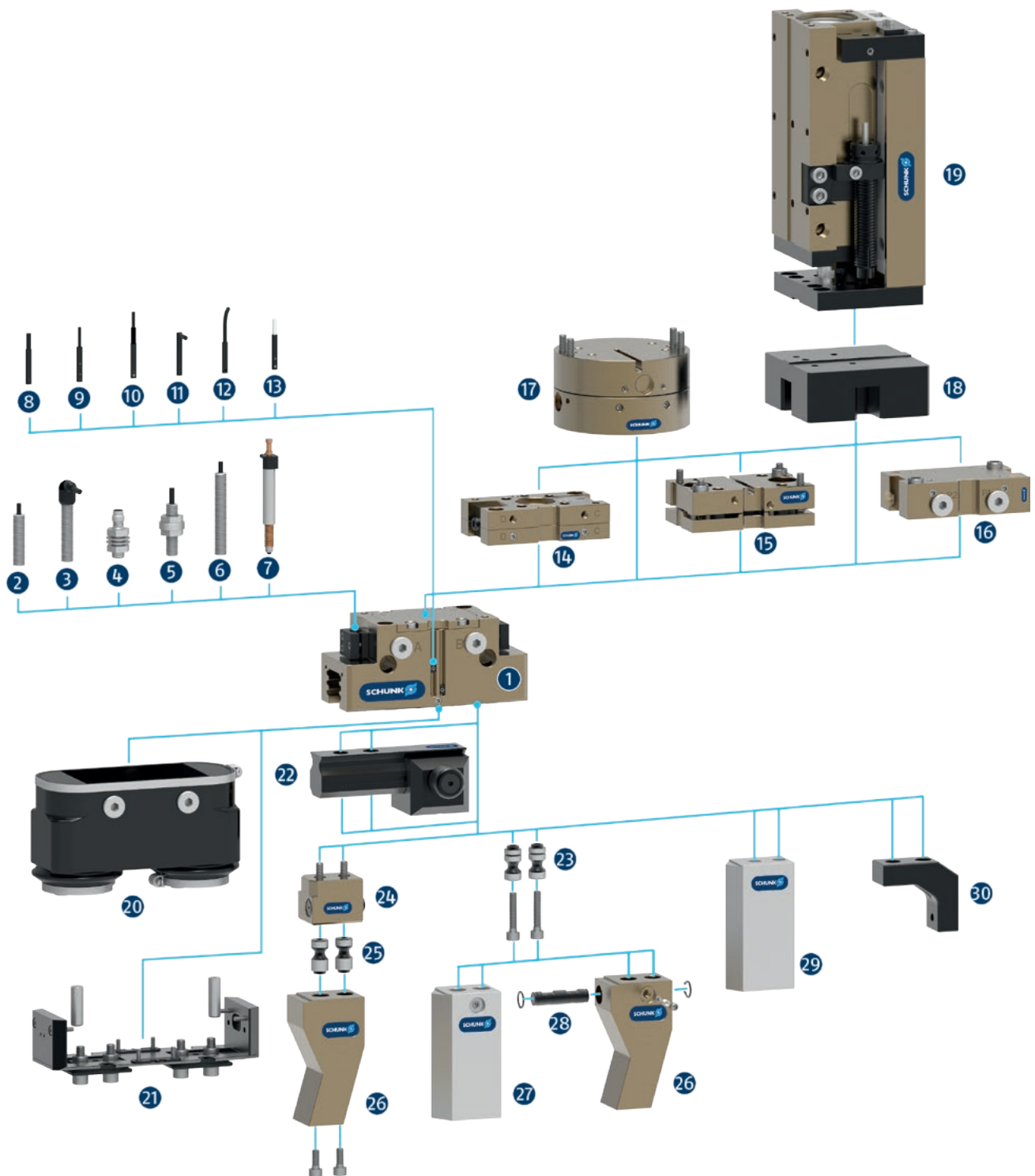
Integrated air purge connection: impedes the ingress of dirt into the inside of the gripper

PGN-plus-P

Universal gripper

SCHUNK gripper PGN-plus-P

Overview Accessories



1 PGN-plus-P

Universal 2-finger parallel gripper with a high gripping force and high maximum moments due to the use of a multi-tooth guidance

Sensor system

2 IN ...

Inductive proximity switch with molded cable and straight cable outlet

3 IN ...-SA

Inductive proximity switch with molded cable and lateral cable outlet

4 IN-C 80

Inductive proximity switch, directly pluggable

5 FPS

Flexible position sensor for monitoring up to five different, freely selectable positions

6 APS-Z80

Inductive position sensor for precise position detection of the gripper jaws with analog output

7 APS-M1S

Mechanical measuring system for precise position detection of the gripper jaw with analog output

8 MMS 22

Magnetic switch with straight cable outlet for monitoring a position

MMS 22-PI1

Magnetic switch with straight cable outlet for monitoring a freely programmable position

9 MMS 22-PI2

Magnetic switch with straight cable outlet for monitoring two freely programmable positions

10 MMS 22-PI1-HD

MMS 22-PI1 in robust design

MMS 22-PI2-HD

MMS 22-PI2 in robust design

11 MMS 22-SA

Magnetic switch with lateral cable outlet for monitoring a position

MMS 22-PI1-SA

Magnetic switch with side cable outlet for monitoring a freely programmable position

12 MMS-P

Magnetic switch with straight cable outlet for monitoring two freely programmable positions

13 MMS-A

Analog magnetic switch with straight cable outlet for measuring the gripper jaw position with analog output and teach function

Complementary products

14 CWS

Manual change system with integrated air feed-through for simple exchange of the handling components

15 TCU

Tolerance compensation unit for compensating small tolerances in the plane

16 SDV-P-E-P

Pressure maintenance valve for temporary force and position maintenance

17 AGE

Compensation unit for compensation of large tolerances along the X and Y axes

18 ASG

Adapter plate for combining various automation components in the modular system

19 CLM

Linear module with pneumatic drive and scope-free pre-loaded junction rollers

20 HUE

Sleeve for protection against dirt

21 SAD

Dust-proof version, retrofit kit

Fingerzubehör

22 UZB

The universal intermediate jaw allows fast tool-free and reliable plugging and shifting of top jaws at the gripper.

23 BSWS-AR

Adapter coupling of jaw quick-change system for fast, manual change of top jaws

24 BSWS-B

Locking mechanism of the jaw quick-change system for fast, manual exchange of top jaws

25 BSWS-A

Adapter coupling of the jaw quick-change system for adaptation to the customized finger

26 Customized fingers

27 BSWS-ABR

Finger blank made of aluminum with interface to the jaw quick-change system

BSWS-SBR

Finger blank made of steel with interface to the jaw quick-change system

28 BSWS-UR

Locking mechanism for the integration of the jaw quick-change system into customized fingers

29 ABR/SBR

Finger blanks made of steel or aluminum with standardized screw connection diagram

30 ZBA

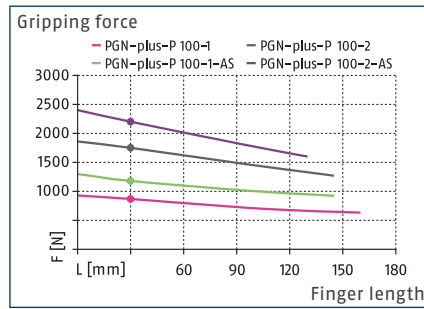
Intermediate jaws for reorientation of the mounting surface

PGN-plus-P 100

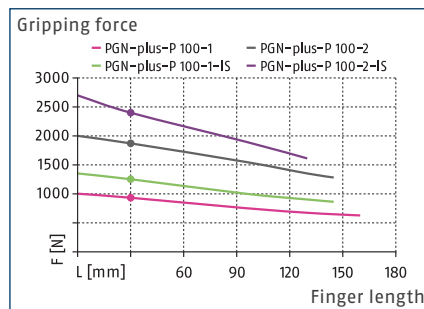
Universal gripper



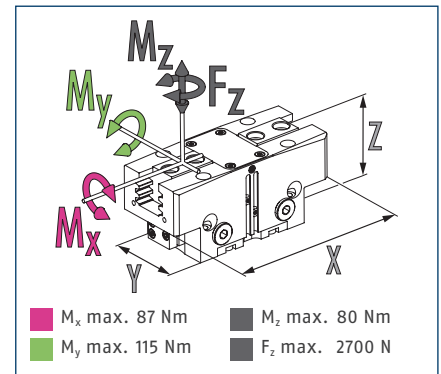
Gripping force O.D. gripping



Gripping force I.D. gripping



Dimensions and maximum loads



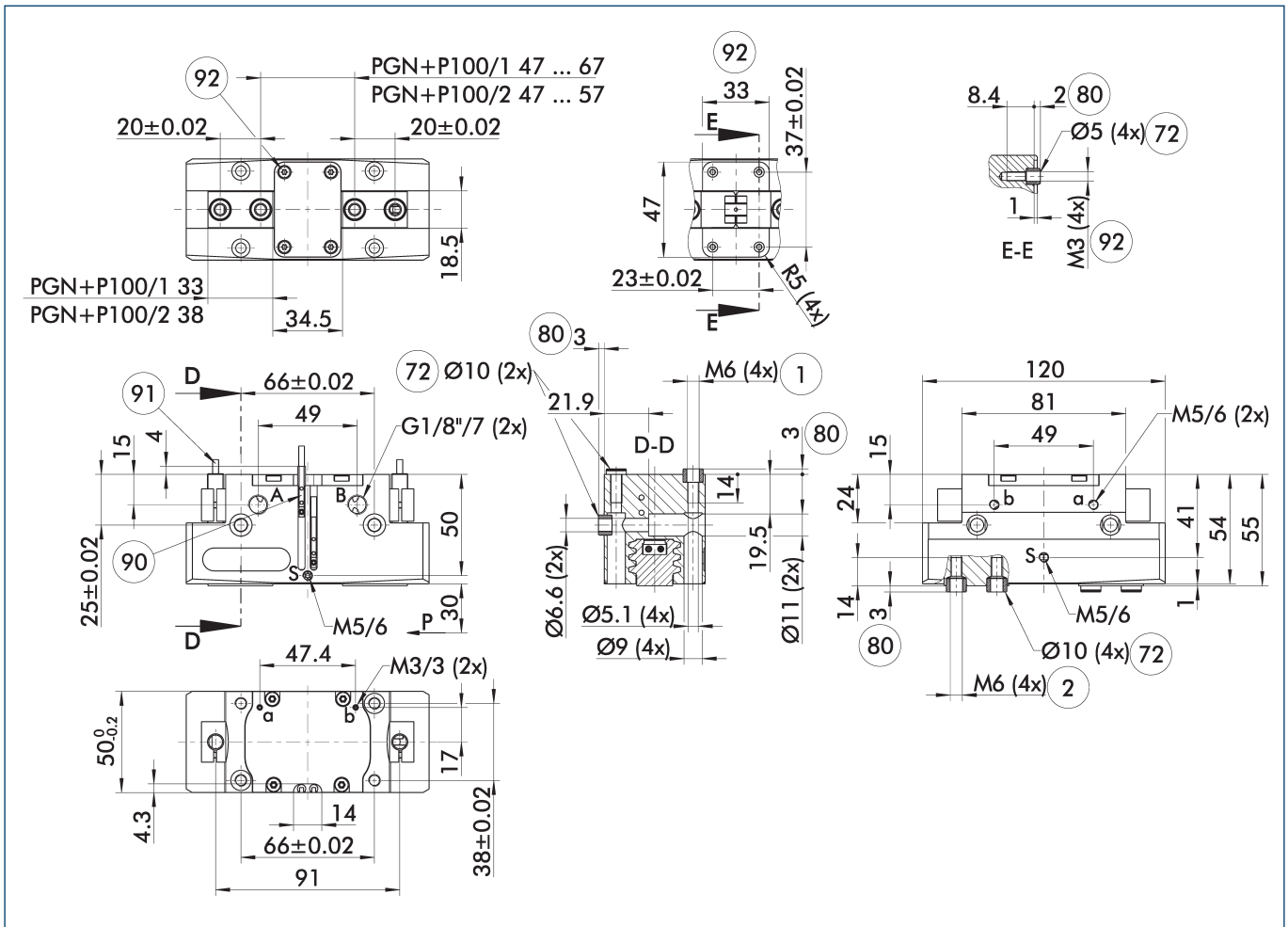
ⓘ The specified torques and forces are static values, apply for each base jaw, and may occur simultaneously. M_y may arise in addition to the moment generated by the gripping force itself.

Technical data

Description		PGN-plus-P 100-1	PGN-plus-P 100-2	PGN-plus-P 100-1-AS	PGN-plus-P 100-2-AS	PGN-plus-P 100-1-IS	PGN-plus-P 100-2-IS
ID		0318544	0318545	0318546	0318547	0318548	0318549
Stroke per jaw	[mm]	10	5	10	5	10	5
Closing/opening force	[N]	870/930	1750/1870	1180/-	2200/-	-/1250	-/2400
Min. spring force	[N]			310	450	320	530
Weight	[kg]	0.9	0.9	1.1	1.1	1.1	1.1
Recommended workpiece weight	[kg]	4.35	8.75	4.35	8.75	4.35	8.75
Fluid consumption double stroke	[cm ³]	55	55	84	84	92	92
Min./nom./max. operating pressure	[bar]	2.5/6/8	2.5/6/8	4/6/6.5	4/6/6.5	4/6/6.5	4/6/6.5
Min./max. air purge pressure	[bar]	0.5/1	0.5/1	0.5/1	0.5/1	0.5/1	0.5/1
Closing/opening time	[s]	0.07/0.07	0.07/0.07	0.05/0.09	0.05/0.09	0.09/0.05	0.09/0.05
Closing/opening time with spring	[s]			0.10	0.10	0.10	0.10
Max. permissible finger length	[mm]	160	145	145	130	145	130
Max. permissible mass per finger	[kg]	1.3	1.3	1.3	1.3	1.3	1.3
Protection class IP		40	40	40	40	40	40
Min./max. ambient temperature	[°C]	5/90	5/90	5/90	5/90	5/90	5/90
Repeat accuracy	[mm]	0.01	0.01	0.01	0.01	0.01	0.01
Dimensions X x Y x Z	[mm]	120 x 50 x 55	120 x 50 x 55	120 x 50 x 81	120 x 50 x 81	120 x 50 x 81	120 x 50 x 81
Options and their characteristics							
Dust-tight version		1317570	1317571	1317572	1317574	1317578	1317581
Protection class IP		64	64	64	64	64	64
Weight	[kg]	1.02	1.02	1.22	1.22	1.22	1.22
Anti-corrosion version		38318544	38318545	38318546	38318547	38318548	38318549
High-temperature version		39318544	39318545	39318546	39318547	39318548	39318549
Min./max. ambient temperature	[°C]	5/130	5/130	5/130	5/130	5/130	5/130
Precision version		0318550	0318551	0318552	0318553		

ⓘ It may take a few 100 gripping cycles until the full gripping force (as indicated in the data table) will be available.

Main view



The drawing shows the gripper in the basic version with closed jaws, without dimensional consideration of the options described below.

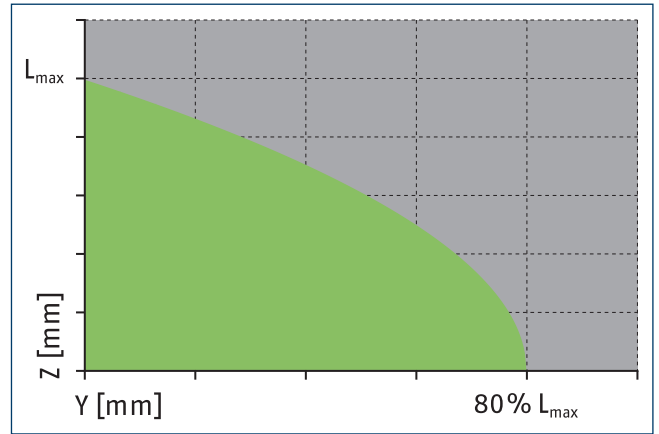
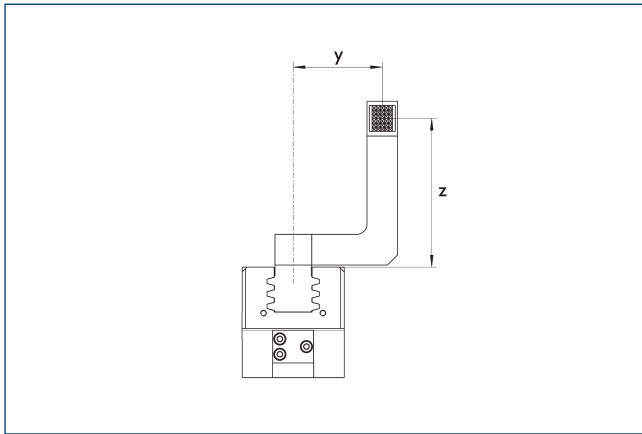
- A, a Main / direct connection, gripper opening
- B, b Main / direct connection, gripper closing
- S Air purge connection
- ① Gripper connection
- ② Finger connection
- ⑦ Fit for centering sleeves

- ⑧ Depth of the centering sleeve hole in the counter part
- ⑨ Sensor MMS 22..
- ⑩ Sensor IN ...
- ⑪ Screw connection with fittings for customized attachment (these centering sleeves are not included in the scope of delivery)

PGN-plus-P 100

Universal gripper

Maximum permitted finger projection

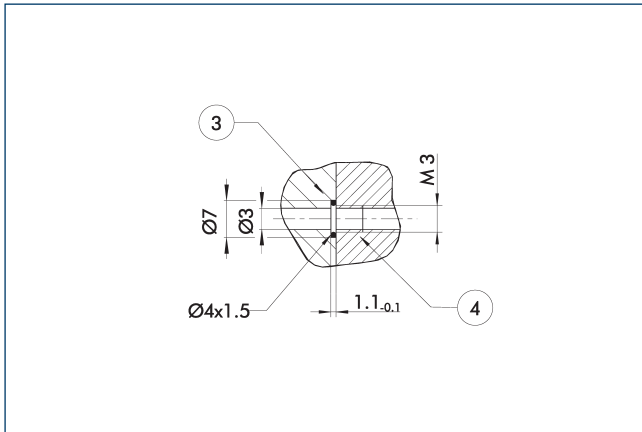


■ Permitted range

■ Inadmissible range

L_{max} is equivalent to the maximum permitted finger length, see the technical data table.

Hose-free direct connection M3

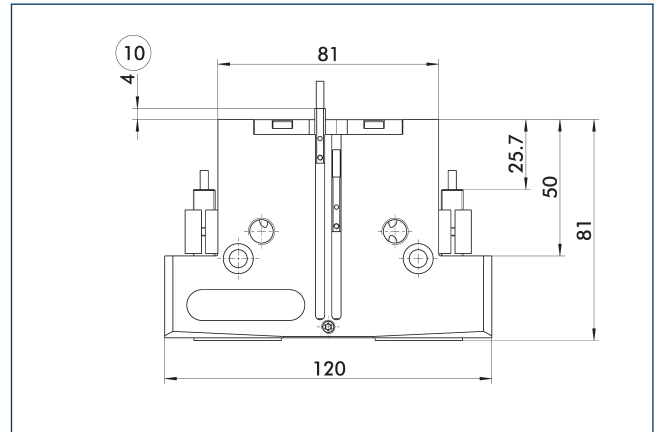


③ Adapter

④ Grippers

The direct connection is used for supplying compressed air without hoses. Instead, the pressure medium is fed through bore-holes in the mounting plate.

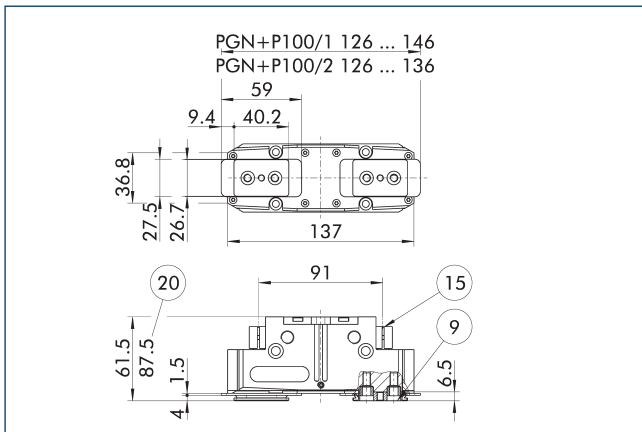
Gripping force maintenance device AS / IS



⑩ Projection applies only for AS version

The mechanical gripping force maintenance device ensures that a minimum clamping force will be applied even if there is a drop in pressure. This acts as closing force in the AS / S version, and as opening force in the IS version. Besides this, the gripping force maintenance device can be used to increase the gripping force or for single actuated gripping.

Dust-tight version



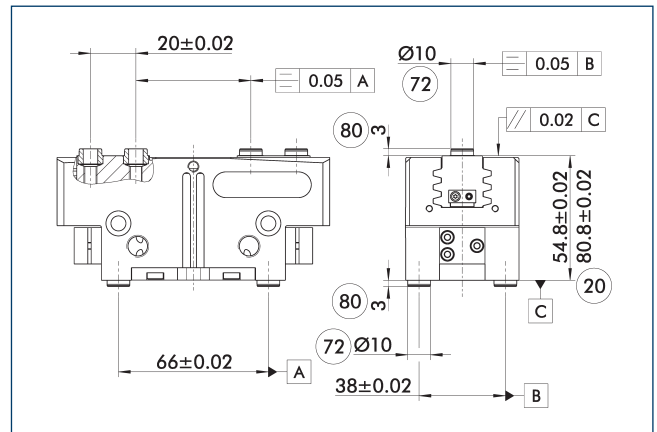
- ⑨ For mounting screw connection ⑮ Sealing bolt
- ⑩ For AS / IS version ⑯ For AS / IS version

The dust cover option increases the protection against external particles. The assembly diagram shifts by the height of the intermediate jaw. The finger length is still measured from the upper edge of the gripper housing.

Description	ID
Dust cover	
SAD PGN-plus-P 100	1347566

- ① The "dust-proof" option can either be ordered in the pre-mounted gripper version or retrofitted to the gripper using the "SAD PGN-plus-P" retrofit kit.

Precision version



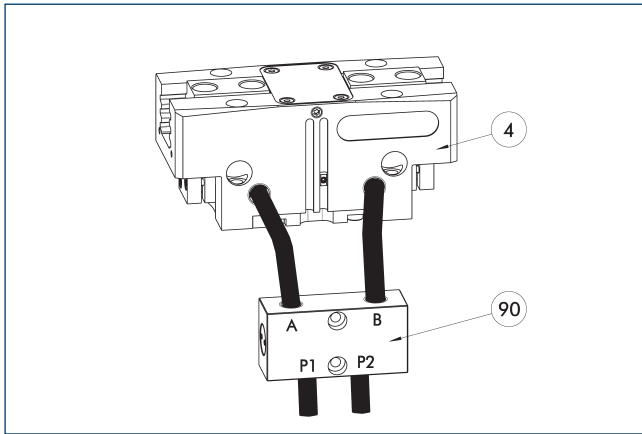
- ②① For AS / IS version ⑧① Depth of the centering sleeve
- ②② Fit for centering sleeves hole in the counter part

The indicated tolerances just refer to the variants of precision versions shown in the chart of technical specifications. All other variants of precision versions are available on request.

PGN-plus-P 100

Universal gripper

SDV-P pressure maintenance valve



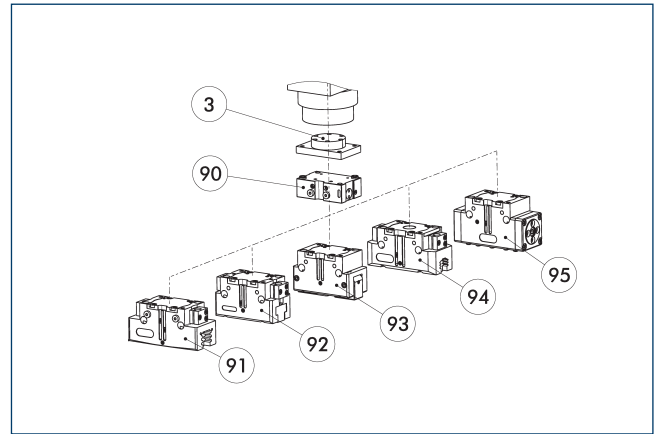
- ④ Grippers
- ⑨⑩ SDV-P pressure maintenance valve

The SDV-P pressure maintenance valve ensures in emergency STOP situations that the pressure in the piston chamber of pneumatic gripper, swivel, linear, and quick-change modules is temporarily maintained.

Description	ID	Recommended hose diameter
		[mm]
Pressure maintenance valve		
SDV-P 04	0403130	6
SDV-P 07	0403131	8
Pressure maintenance valve with air bleed screw		
SDV-P 04-E	0300120	6
SDV-P 07-E	0300121	8

- ⓘ In order to achieve the specified closing and opening time for each gripper variant, the recommended hose diameter must be used. The direct allocation of the respective variant of the gripper for the respective SDV-P can be found at schunk.com.

SDV-P E-P pressure maintenance valve

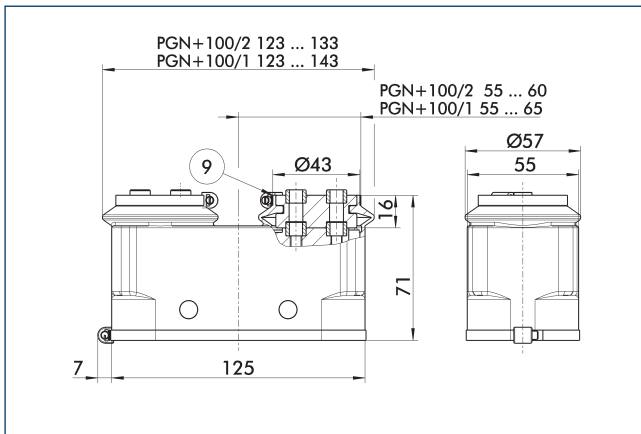


- ③ Adapter
- ⑨⑩ SDV-P E-P pressure maintenance valve
- ⑨① PGN-plus / PGN-plus-P 2-finger gripper
- ⑨② JGP 2-finger parallel grippers
- ⑨③ 2-finger angular gripper PWG-plus
- ⑨④ 2-finger parallel gripper PGB
- ⑨⑤ Sealed DPG-plus gripper

The SDV-P E-P pressure maintenance valves ensure that the pressure in the piston chamber is maintained temporarily during an emergency stop. SDV-P E-P can be directly connected to the listed grippers without the need for additional pneumatic hoses.

Description	ID
Pressure maintenance valve	
SDV-P 100-E-P	0300126

Protective cover HUE PGN-plus 100



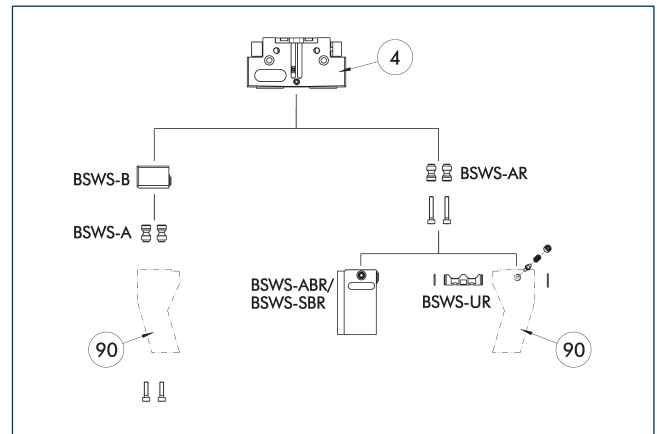
⑨ For mounting screw connection diagram, see basic version

The HUE protective cover fully protects the gripper against external influences. The cover is suitable for applications of up to IP65 if an additional sealing of the cover bottom is provided. For detailed information, please see the HUE series. The connection diagram shifts by the height of the intermediate jaw.

Description	ID	Protection class IP
Protection cover		
HUE PGN-plus 100	0371482	65

⑩ The HUE protective cover is not suitable for use on grippers with gripping force maintenance. An inductive monitoring of the gripper in connection with the HUE protective cover is not possible. SCHUNK recommends the use of magnetic sensors that are approved for the respective gripper variant.

BSWS jaw quick-change jaw systems



④ Grippers

⑨ Customized gripper fingers

There are various jaw quick-change systems available for the gripper. For detailed information, please refer to the corresponding product.

Description	ID	Scope of delivery
Jaw quick-change system adapter plate		
BSWS-A 100	0303026	2
BSWS-AR 100	0300094	2
Quick-change jaw system base		
BSWS-B 100	0303027	1
Jaw quick-change system finger blank		
BSWS-ABR-PGZN-plus 100	0300074	1
BSWS-SBR-PGZN-plus 100	0300084	1
Jaw quick-change system locking mechanism		
BSWS-UR 100	0302993	1

⑪ Only systems that are listed in the table, can be used.

Fields of application

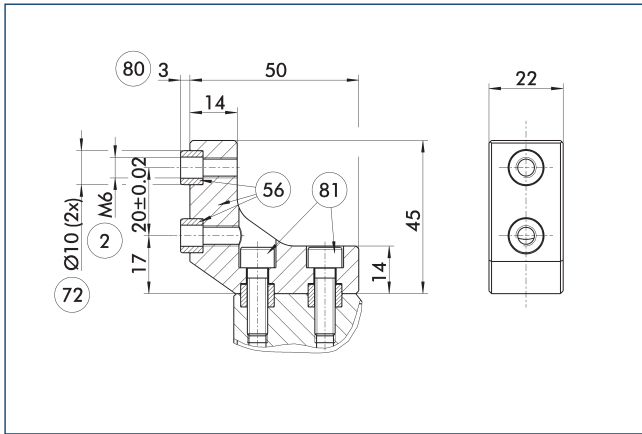
Series	Size	Variant	Suitability
PGN-plus-P	100	-1 (6 bar)	■■■■■
PGN-plus-P	100	-1-AS / -1-IS (6 bar)	■■■■■
PGN-plus-P	100	-2 (6 bar)	■■■■■
PGN-plus-P	100	-2-AS / -2-IS (6 bar)	■■■■■
Legend			
■■■■■	Can be combined without restrictions		
■■■□□	Use with restrictions (see loading limits)		
□□□□	cannot be combined		

The load limits for describing the application limits can be found in the catalog chapter of the corresponding accessories. If the operating pressure is higher than 6 bar, suitability for use above the application limits must be checked.

PGN-plus-P 100

Universal gripper

ZBA-L-plus 100 intermediate jaws

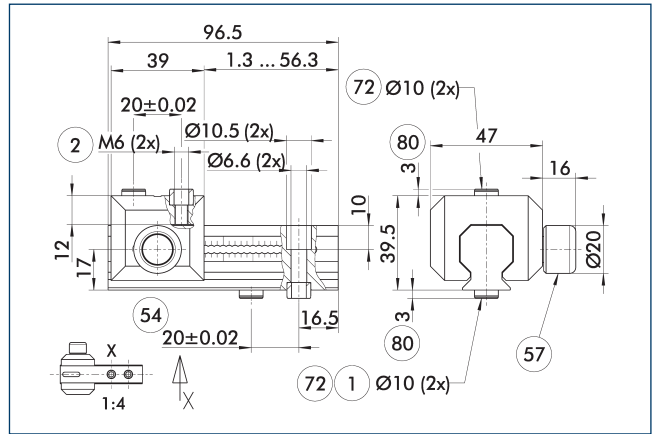


- ② Finger connection
- ⑤⑥ Included in the scope of delivery
- ⑦② Fit for centering sleeves
- ⑧① Depth of the centering sleeve hole in the counter part
- ⑧① Not included in the scope of delivery

The optional ZBA-L-plus intermediate jaws allow the screw connection diagram of the top jaws to be rotated by 90°. This makes it easier to design and produce top jaws (particularly for long versions) because no deep through-bores are required.

Description	ID	Material	Finger interface	Scope of delivery
Intermediate jaw				
ZBA-L-plus 100	0311742	Aluminum	PGN-plus 100	1

UZB 100 universal intermediate jaw



- ① Gripper connection
- ② Finger connection
- ⑤④ Optional right or left connection
- ⑤⑦ Locking
- ⑦② Fit for centering sleeves
- ⑧① Depth of the centering sleeve hole in the counter part

The drawing shows the UZB universal intermediate jaw. The fully removable UZB-S slide (can also be ordered separately) allows for a quick jaw change.

Description	ID	Grid dimension
Universal intermediate jaw		
UZB 100	0300044	2.5
Finger blank		
ABR-PGZN-plus 100	0300012	
SBR-PGZN-plus 100	0300022	
Slide for universal intermediate jaw		
UZB-S 100	5518272	2.5

Fields of application

Series	Size	Variant	Suitability
PGN-plus-P	100	-1 (6 bar)	■■■■
PGN-plus-P	100	-1-AS / -1-IS (6 bar)	■■□□
PGN-plus-P	100	-2 (6 bar)	■■□□
PGN-plus-P	100	-2-AS / -2-IS (6 bar)	□□□□

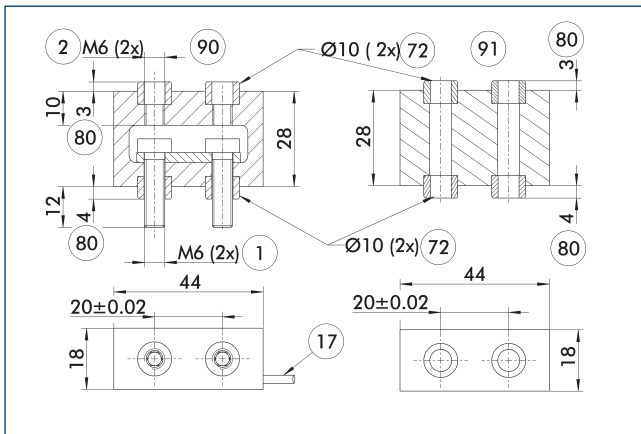
Legend

- Can be combined without restrictions
- Use with restrictions (see loading limits)
- cannot be combined

The load limits for describing the application limits can be found in the catalog chapter of the corresponding accessories.

If the operating pressure is higher than 6 bar, suitability for use above the application limits must be checked.

Force-measuring jaws FMS-ZBA/ ZBP 100



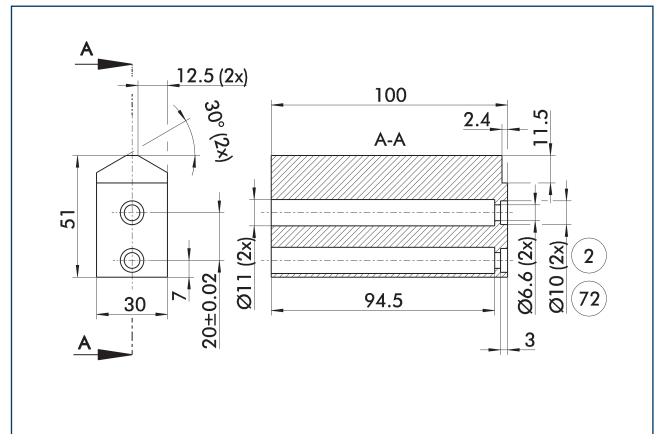
- ① Gripper connection
- ② Finger connection
- ⑦ Cable outlet
- ⑦② Fit for centering sleeves
- ⑧⑩ Depth of the centering sleeve hole in the counter part
- ⑨⑩ Active intermediate jaws
- ⑨① Passive intermediate jaws

Force-measuring jaws measure gripping forces, but can also determine workpiece weights or dimensional deviations. There are active and passive intermediate jaws (FMS-ZBA or FMS-ZBP). At least one active force-measuring jaw is required per gripper, the rest can be passive. For each active jaw, a FMS-A1 evaluation unit and a FMS-A connection cable are required.

Description	ID	Often combined
Active intermediate jaws		
FMS-ZBA 100	0301836	
Passive intermediate jaws		
FMS-ZBP 100	0301837	
Connection cables		
FMS-AK0200	0301820	●
FMS-AK0500	0301821	
FMS-AK1000	0301822	
FMS-AK2000	0301823	
Evaluation electronics		
FMS-A1	0301810	

① Due to the screw length, the FMS system can not be used in combination with the option dust-proof (SD) of the gripper. Please note that the admissible force range of the force measuring jaw (see catalog chapter FMS) should not be exceeded for the chosen gripper version.

Finger blanks ABR- / SBR-PGZN-plus 100



- ② Finger connection
- ⑦② Fit for centering sleeves

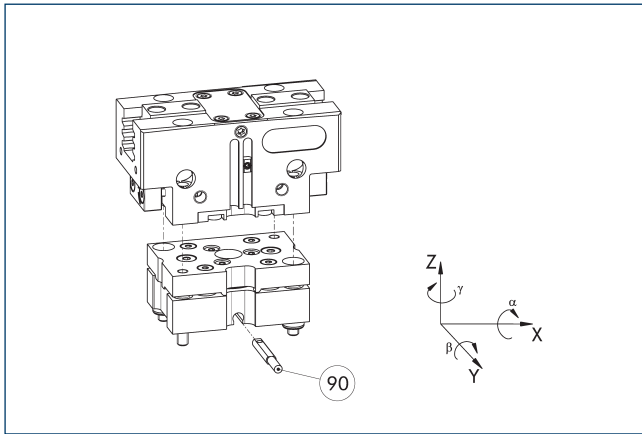
The drawing shows the finger blank which can be reworked by the customer.

Description	ID	Material	Scope of delivery
Finger blank			
ABR-PGZN-plus 100	0300012	Aluminum	1
SBR-PGZN-plus 100	0300022	Steel	1

PGN-plus-P 100

Universal gripper

Tolerance compensation unit TCU

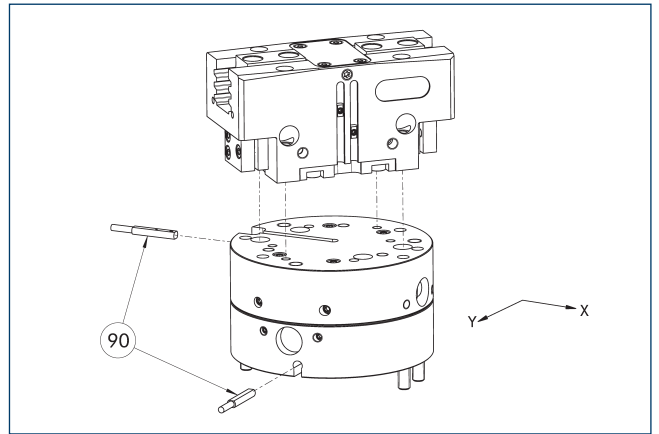


90 Monitoring of locking

Grippers can be directly mounted without an adapter plate. Tolerance compensation unit and gripper have an identical screw connection diagram. Therefore the tolerance compensation units can be assembled later. Please consider the additional assembly height of the tolerance compensation unit. For details please refer to our catalog robot accessories.

Description	ID	Locking	Deflection	Often combined
Compensation unit				
TCU-P-100-2-MV	0324808	yes	$\pm 1^\circ / \pm 1,5^\circ / \pm 1,2^\circ$	●
TCU-P-100-3-0V	0324811	no	$\pm 1^\circ / \pm 1,5^\circ / \pm 1,2^\circ$	

Compensation unit AGE-F



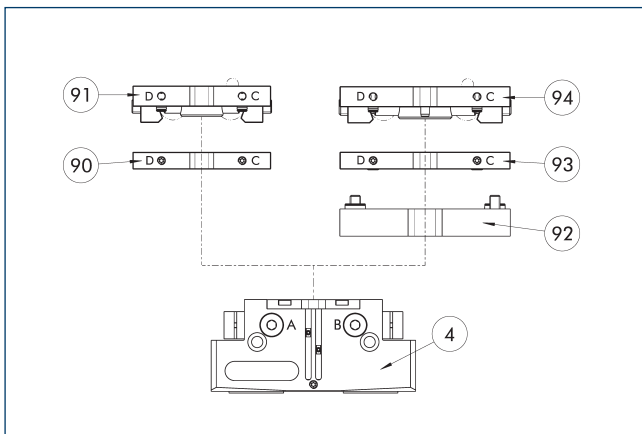
90 Monitoring

The unit has direct connection possibilities for different grippers of the PGN-plus, PGN-plus-P and PZN-plus series. For more detailed information, please refer to the main view.

Description	ID	Compensation XY [mm]	Reset force [N]	Often combined
Compensation unit				
AGE-F-XY-080-1	0324960	± 5	39	
AGE-F-XY-080-2	0324961	± 5	85	
AGE-F-XY-080-3	0324962	± 5	90	●

① Due to the interfering contour, monitoring of the gripper is not possible.

Compact change system for grippers

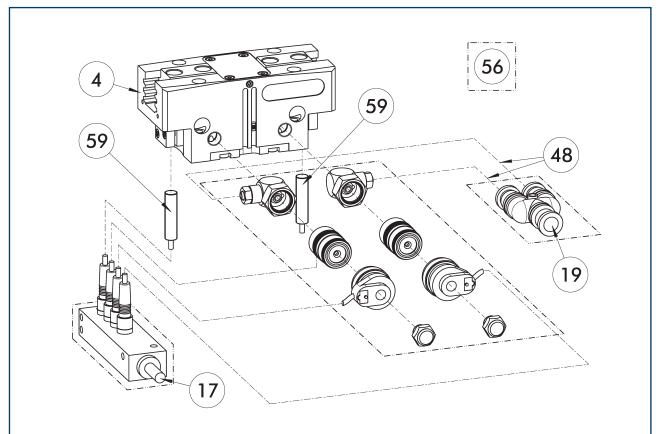


- ④ Grippers
- ⑨② A-CWA adapter plate
- ⑨① CWA compact change adapter
- ⑨③ CWA compact change adapter
- ⑨① CWK compact change master
- ⑨④ CWK compact change master

Grippers can be directly mounted without an adapter plate. For details see our catalog Gripping or Robot Accessories.

Description	ID
CWA compact change adapter	
CWA-100-P	0305801
CWK compact change master	
CWK-100-P	0305800
Tool side	
A-CWA-100-080-P	0305804

Attachment valves

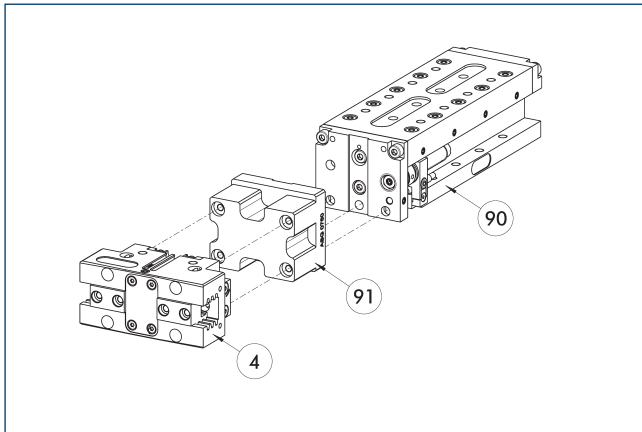


- ④ Grippers
- ④⑧ Hose
- ④⑦ Cable outlet
- ④⑥ Included in the scope of delivery
- ④⑨ Air connection
- ④⑤ Monitoring gripping

For each unit one attachment valve ABV is required, optional with distributor for sensors and valves. Attachment valves increase the efficiency, reduce the installation work and air consumption and simplify air supply. For details please refer to the "Accessories" catalog chapter.

Description	ID	Often combined
Attachment valve		
ABV-MV30-G1/8	0303328	
ABV-MV30-G1/8-V2-M8	0303396	
ABV-MV30-G1/8-V4-M8	0303366	●
ABV-MV30-G1/8-V8-M8	0303367	

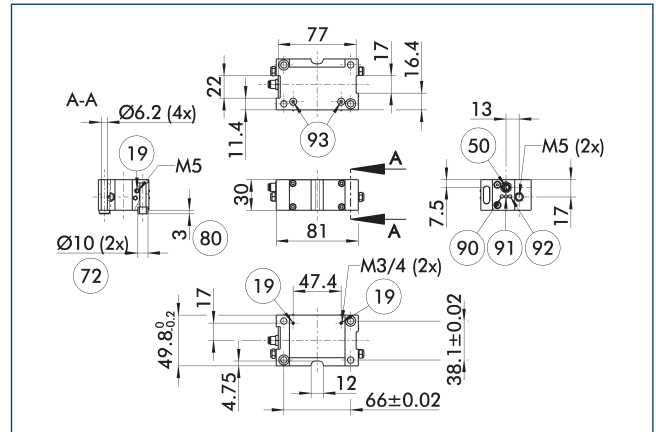
Modular Assembly Automation



- ④ Grippers
- ⑨① ASG adapter plate
- ⑨① CLM/KLM/LM/ELP/ELM/ELS/HLM linear modules

Grippers and linear modules can be combined with standard adapter plates from the modular assembly system. For more information see our main catalog "Modular Assembly Automation".

VB-PGN-plus 100 valve box



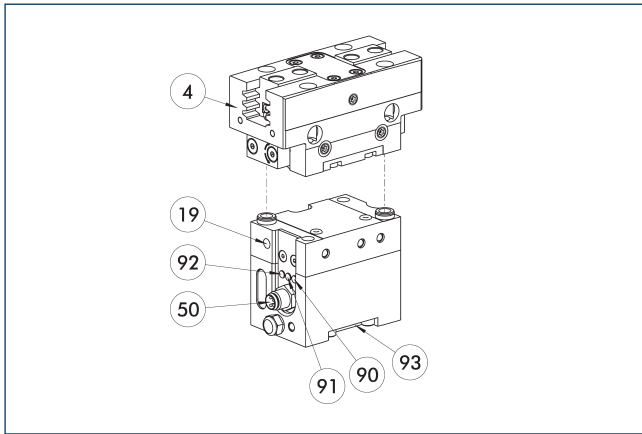
- ①⑨ Air connection
- ⑤① Electrical connection
- ⑦② Fit for centering sleeves
- ⑧① Depth of the centering sleeve hole in the counter part
- ⑨① Voltage status indicator
- ⑨① Status display valve connection b opened
- ⑨② Status display valve connection a opened
- ⑨③ Valve connection a and b

Description	ID
Valve box	
VB-PGN-plus 100	0310094

PGN-plus-P 100

Universal gripper

Valve box



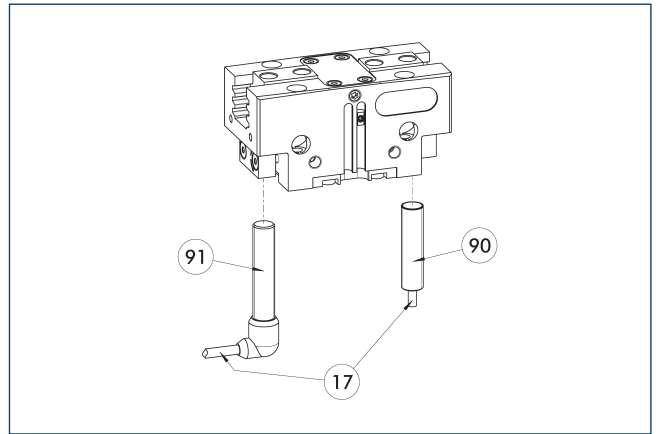
- ④ Grippers
- ①⑨ Air connection
- ⑤⑩ Electrical connection
- ⑨⑩ Power supply
- ⑨① Status display valve connection b opened
- ⑨② Status display valve connection a opened
- ⑨③ Direct connection for hose-free compressed air supply

Decentralized control solution completely ready for use! The valves are directly mounted on the handling component. This allows a strong reduction of cycle times, commissioning times, air consumption, and less tubing. All of these combined lead to maximum process reliability with minimum effort.

Description	ID	Often combined
Valve box		
VB-PGN-plus 100	0310094	
Connection cables		
KA BG08-L 4P-0500	0307767	●
KA BG08-L 4P-1000	0307768	
KA BW08-L 4P-0500	0307765	
KA BW08-L 4P-1000	0307766	
Sensor distributor		
V2-M8-4P-2XM8-3P	0301380	
clip for plug/socket		
CLI-M8	0301463	

- ① Valve and sensor signals of the unit can be merged on a bus distributor so that the electrical as well as the pneumatic connections can be decentralized.

Inductive Proximity Switches



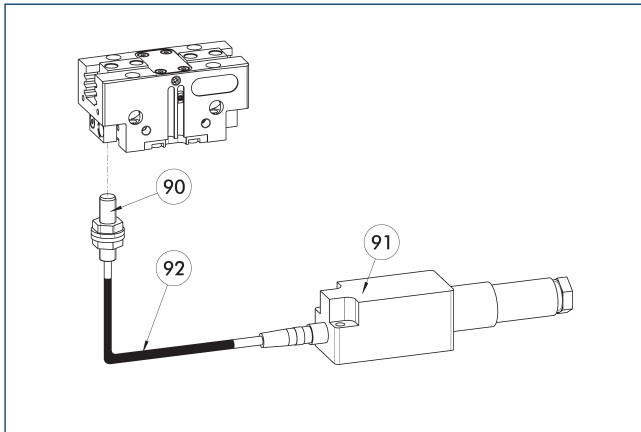
- ①⑦ Cable outlet
- ⑨⑩ Sensor IN ...
- ⑨① Sensor IN...-SA

Directly mounted end position monitoring.

Description	ID	Often combined
Inductive proximity switches		
IN 80-S-M12	0301578	
IN 80-S-M8	0301478	●
INK 80-S	0301550	
Inductive proximity switch with lateral cable outlet		
IN 80-S-M12-SA	0301587	
IN 80-S-M8-SA	0301483	●
INK 80-S-SA	0301566	
Cable extension		
KV BG12-SG12 3P-0030-PNP	0301999	
KV BG12-SG12 3P-0060-PNP	0301998	
KV BW08-SG08 3P-0030-PNP	0301495	
KV BW08-SG08 3P-0100-PNP	0301496	
KV BW08-SG08 3P-0200-PNP	0301497	●
KV BW12-SG12 3P-0030-PNP	0301595	
KV BW12-SG12 3P-0100-PNP	0301596	
KV BW12-SG12 3P-0200-PNP	0301597	
clip for plug/socket		
CLI-M12	0301464	
CLI-M8	0301463	
Connection cables		
KA BG08-L 3P-0300-PNP	0301622	●
KA BG08-L 3P-0500-PNP	0301623	
KA BG12-L 3P-0500-PNP	30016369	
KA BW08-L 3P-0300-PNP	0301594	
KA BW08-L 3P-0500-PNP	0301502	
KA BW12-L 3P-0300-PNP	0301503	
KA BW12-L 3P-0500-PNP	0301507	
Sensor distributor		
V2-M12	0301776	●
V2-M8	0301775	●
V4-M12	0301747	
V4-M8	0301746	
V8-M12	0301752	
V8-M8	0301751	

- ① Two sensors are required per unit for monitoring two positions. On option, extension cables and sensor distributors are available. Additional product variants of the sensor, and further information and technical data can be found in the catalog chapter sensor system.

Flexible position sensor



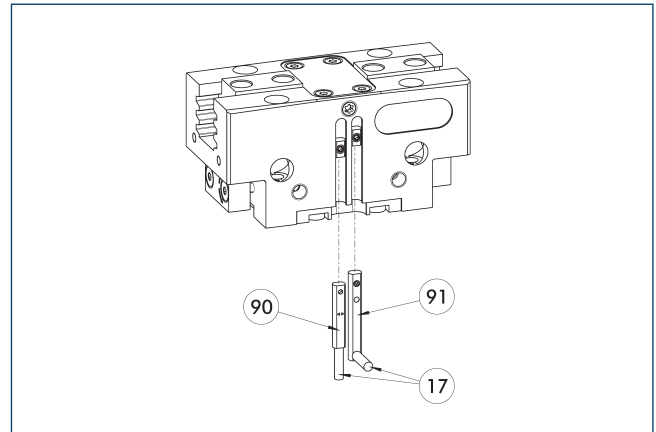
- ⑨⑩ FPS-S sensor
- ⑨① FPS-F5 evaluation electronic
- ⑨② Cable extension

Flexible position monitoring of up to five positions.

Description	ID	
Attachment kit for FPS		
AS-FPS-PGN-plus-P 100	1363897	
Sensor		
FPS-S M8	0301704	
Cable extension		
KV BG08-SG08 3P-0050	0301598	
KV BG08-SG08 3P-0100	0301599	
Evaluation electronics		
FPS-F5	0301805	

- ① When using an FPS system, an FPS sensor (FPS-S) as well as an electronic processor (FPS-F5 / F5 T) are required for each gripper as well as a mounting kit (AS), if listed. Cable extensions (KV) are optionally available – see catalog chapter “Accessories.”

Electronic magnetic switch MMS



- ①⑦ Cable outlet
- ①⑨ Sensor MMS 22 Pi1-...
- ①⑩ Sensor MMS 22 Pi1-...

End position monitoring for mounting in the C-slot.

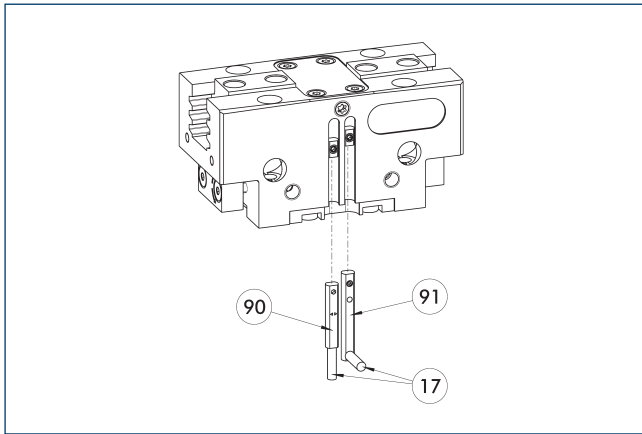
Description	ID	Often combined
Electronic magnetic switch		
MMS 22-S-M8-PNP	0301032	●
MMSK 22-S-PNP	0301034	
Electronic magnetic switches with lateral cable outlet		
MMS 22-S-M8-PNP-SA	0301042	●
MMSK 22-S-PNP-SA	0301044	
Cable extension		
KV BW08-SG08 3P-0030-PNP	0301495	
KV BW08-SG08 3P-0100-PNP	0301496	
KV BW08-SG08 3P-0200-PNP	0301497	●
clip for plug/socket		
CLI-M8	0301463	
Connection cables		
KA BG08-L 3P-0300-PNP	0301622	●
KA BG08-L 3P-0500-PNP	0301623	
KA BW08-L 3P-0300-NPN	0301602	
KA BW08-L 3P-0300-PNP	0301594	
KA BW08-L 3P-0500-NPN	9641116	
KA BW08-L 3P-0500-PNP	0301502	
Sensor distributor		
V2-M8	0301775	●
V4-M8	0301746	
V8-M8	0301751	

- ① Two sensors are required per unit for monitoring two positions. On option, extension cables and sensor distributors are available. Additional product variants of the sensor, and further information and technical data can be found in the catalog chapter sensor system.

PGN-plus-P 100

Universal gripper

Programmable magnetic switch MMS 22-PI1



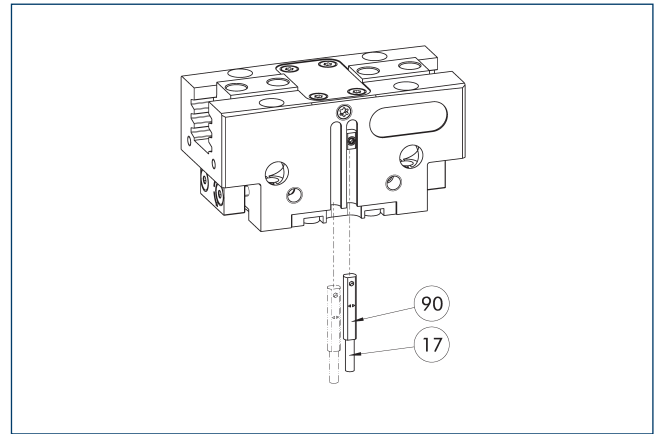
- ①⑦ Cable outlet
- ⑨① Sensor MMS 22 ..-PI1-...-SA
- ⑨① Sensor MMS 22 PI1-...

Position monitoring with one programmable position per sensor and electronics integrated in the sensor. Can be programmed using MT magnetic teaching tool (included in scope of delivery) or ST plug teaching tool (optional). End position monitoring is mounted in the C-slot. If the ST plug teaching tools are listed in the table provided, teaching is only possible with the ST teaching tools.

Description	ID	Often combined
Programmable magnetic switch		
MMS 22-PI1-S-M8-PNP	0301160	●
MMSK 22-PI1-S-PNP	0301162	
Programmable magnetic switch with lateral cable outlet		
MMS 22-PI1-S-M8-PNP-SA	0301166	●
MMSK 22-PI1-S-PNP-SA	0301168	
Programmable magnetic switch with stainless steel housing		
MMS 22-PI1-S-M8-PNP-HD	0301110	●
MMSK 22-PI1-S-PNP-HD	0301112	

- ① Two sensors are required per unit for monitoring two positions. On option, extension cables and sensor distributors are available. Additional product variants of the sensor, and further information and technical data can be found in the catalog chapter sensor system.

Programmable magnetic switch MMS 22-PI2



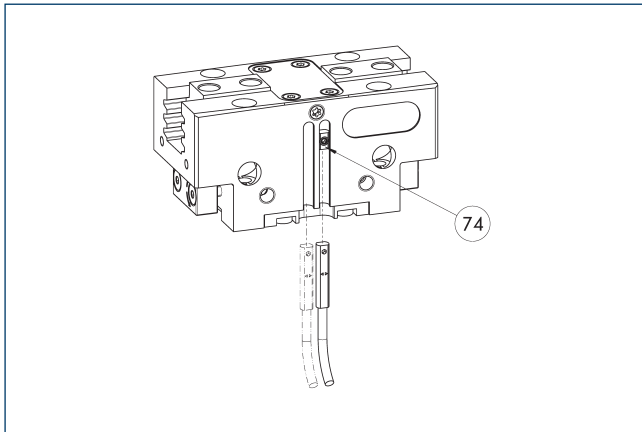
- ①⑦ Cable outlet
- ⑨① MMS 22...-PI2-... sensor

Position monitoring with two programmable positions per sensor and electronics built into the sensor. Can be programmed using MT magnetic teaching tool (included in the scope of delivery) or ST plug teaching tool (optional). End position monitoring for mounting in the C-slot. If the ST plug teaching tools are listed in the table provided, teaching is only possible with the ST teaching tools.

Description	ID	Often combined
Programmable magnetic switch		
MMS 22-PI2-S-M8-PNP	0301180	●
MMSK 22-PI2-S-PNP	0301182	
Programmable magnetic switch with lateral cable outlet		
MMS 22-PI2-S-M8-PNP-SA	0301186	●
MMSK 22-PI2-S-PNP-SA	0301188	
Programmable magnetic switch with stainless steel housing		
MMS 22-PI2-S-M8-PNP-HD	0301130	●
MMSK 22-PI2-S-PNP-HD	0301132	

- ① One sensor is required per unit for monitoring two positions. Extension cables and sensor distributors are optionally available. Additional product variants of the sensor, and further information and technical data can be found in the catalog chapter sensor systems.

MMS-P programmable magnetic switch



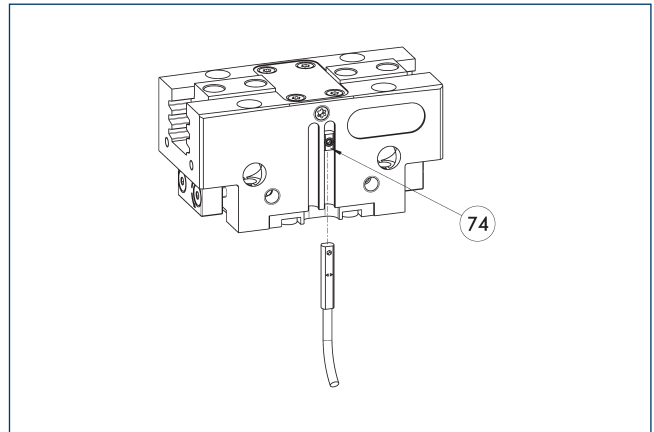
74 Limit stop for sensor

Position monitoring with two programmable positions per sensor. End position monitoring for mounting in the C-slot.

Description	ID	Often combined
Programmable magnetic switch		
MMSK-P 22-S-PNP	0301371	
MMS-P 22-S-M8-PNP	0301370	●
clip for plug/socket		
CLI-M8	0301463	
Connection cables		
KA BG08-L 4P-0500	0307767	●
KA BG08-L 4P-1000	0307768	
KA BW08-L 4P-0500	0307765	
KA BW08-L 4P-1000	0307766	
Sensor distributor		
V2-M8-4P-2XM8-3P	0301380	

- ① One sensor is required per unit for monitoring two positions. Extension cables and sensor distributors are optionally available. Additional product variants of the sensor, and further information and technical data can be found in the catalog chapter sensor systems.

MMS-A analog position sensor



74 Limit stop for sensor

No-contact measuring, analog multi-position monitoring for any number of positions.

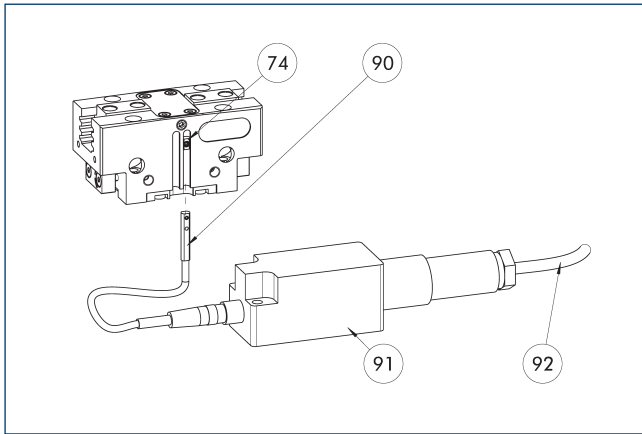
Description	ID	
Analog position sensor		
MMS 22-A-10V-M08	0315825	
MMS 22-A-10V-M12	0315828	

- ① One sensor is needed for each gripper. No additional attachment kit is needed – the standard gripper is equipped for use of the MMS-A.

PGN-plus-P 100

Universal gripper

Flexible position sensor with MMS-A



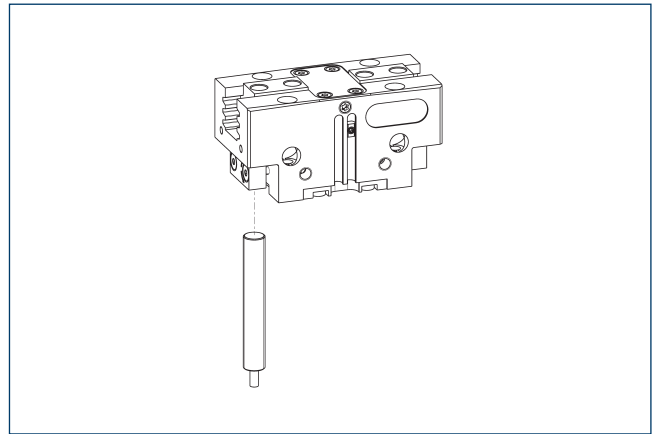
- ⑦④ Limit stop for sensor
- ⑨① FPS-F5 evaluation electronic
- ⑨① MMS 22-A-... sensor
- ⑨② Connection cables

Flexible position monitoring of up to five positions.

Description	ID	
Analog position sensor		
MMS 22-A-05V-M08	0315805	
Evaluation electronics		
FPS-F5	0301805	
Connection cables		
KA BG16-L 12P-1000	0301801	

- ① When using an FPS system, one MMS 22-A-05V and one electronic processor (FPS-F5) are required per each gripper, as well as a mounting kit (AS), if listed. Cable extensions (KV) are optionally available – see catalog chapter "Accessories."

APS-Z80 analog position sensor

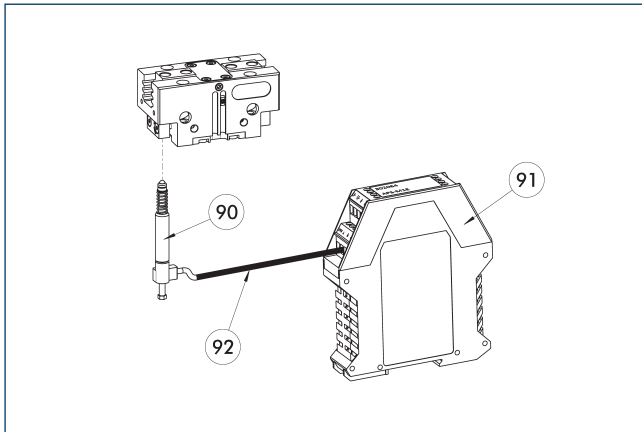


No-contact measuring, analog multi-position monitoring for any number of positions.

Description	ID	Often combined
Mounting kit for APS-Z80		
AS-APS-Z80-PGN-plus-P 100-1	1366219	
AS-APS-Z80-PGN-plus-P 100-2	1366224	
Analog position sensor		
APS-Z80-K	0302072	
APS-Z80-M8	0302070	●

- ① When using an APS system, one attachment kit (AS-APS-Z80) and one APS-Z80 sensor are required per gripper.

APS-M1 analog position sensor



- ⑨⑩ APS-M1S sensor
- ⑨① APS-M1E electronic processor
- ⑨② APS-K extension cable

Analog multi position monitoring for any desired positions

Description	ID	
Mounting kit for APS-M1		
AS-APS-M1-PGN-plus-P 100-1	1363733	
AS-APS-M1-PGN-plus-P 100-2	1363737	
Analog position sensor		
APS-M1S	0302062	

- ① When using an APS system, for each gripper an attachment kit (AS-APS-M1), an APS-M1S sensor (incl. 3 m cable) as well as an electronics (APS-M1e) are required. An extension cable (APS-K) can be connected between the sensor and the electronics as an option. The max. cable length between the sensor and the electronics is 10 m, between the electronics and their control unit (PLC) it is max. 1 m.

SCHUNK GmbH & Co. KG
Spann- und Greiftechnik

Bahnhofstr. 106 - 134
D-74348 Lauffen/Neckar
Tel. +49-7133-103-0
Fax +49-7133-103-2239
info@de.schunk.com
www.schunk.com

Folgen Sie uns



J. Lehmann

Jens Lehmann, German goalkeeper legend, SCHUNK brand ambassador since 2012 for safe, precise gripping and holding.
schunk.com/Lehmann