

OnRobot Eyes

Adding vision to robotic applications has never been easier

TECHNICAL SPECIFICATIONS

Camera Characteristics		Unit		
Interface	USB-C 3.x			
Output Resolution	1280 x 720		[px]	
Working distance	400-1000 [15.75 - 39.37]		mm [inch]	
Operating Temperature	0 - 35 [32 - 95]		°C [°F]	
IP rating	IP 54			
Weight	0.260 [0.57]		kg [lb]	
Eyes Features		Unit		
Type of vision system	2.5 D			
Minimum part size	10x10 or 15 diameter [0.39x0.39 or 0.59 diameter]		mm [inch]	
Applications Supported	Detection, Sorting, Inspection, Landmark			
Mounting options supported	Robot and External			
Reconfigurability when Robot mounted	12 configurations (4 x 3)			
	Around robot's flange	Tilt orientations	[degrees]	
	0 - 90 - 180 - 270	0 - 45 - 90		
Detection Repeatability	< 2 [< 0.078]		mm [inch]	
Detection Accuracy (typical) measured at 500 mm	External Mount	Robot Mount		
	2 [0.078]	2 [0.078]	mm [inch]	
Minimum Inspection Defect Size	5 [0.197]		mm [inch]	
Landmark accuracy **	Waypoint distance from Landmark	Minimum error	Typical error	Maximum error
	200 [7.874]	0.2635 [0.0104]	0.6596 [0.0260]	0.9500 [0.0374]
	500 [19.68]	0.6586 [0.0259]	1.6490 [0.0649]	2.3750 [0.0935]
	1000 [39.37]	1.3173 [0.0519]	3.2981 [0.1298]	4.7500 [0.1870]

POWER UP PRODUCTION

- Adding vision to robotic applications has never been easier, with one-picture calibration, fast programming and seamless gripper integration
- Flexible, adaptable vision system with on-robot or external mounting is ideal for almost any collaborative application
- Affordable, efficient 2.5D vision offers depth perception for varying heights or stacked objects
- Easily sort, pick and place unstructured applications with high reliability using any robot arm
- One-shot detection for multiple objects minimizes cycle time
- Inspect objects using color and contour detection — with or without a robot, and ensure consistent quality
- Automatic landmark enables dynamic working environments and mobile robot setups

Applications:



Material Handling



Machine Tending



Plastic



Metal



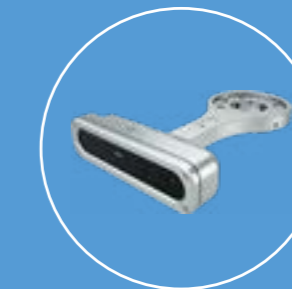
Wood



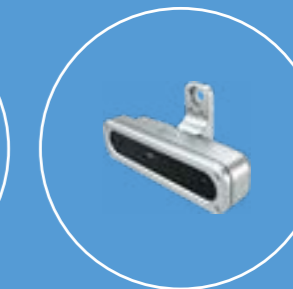
Cardboard



Organic



Robot wrist mount



External mount

OnRobot Eyes

Can be used with products of various sizes and materials, including:

